

220 North 200 East
St. George, UT 84770
435.627.4500 • marathon@sgcity.org



ST. GEORGE MARATHON & MINI MARATHON

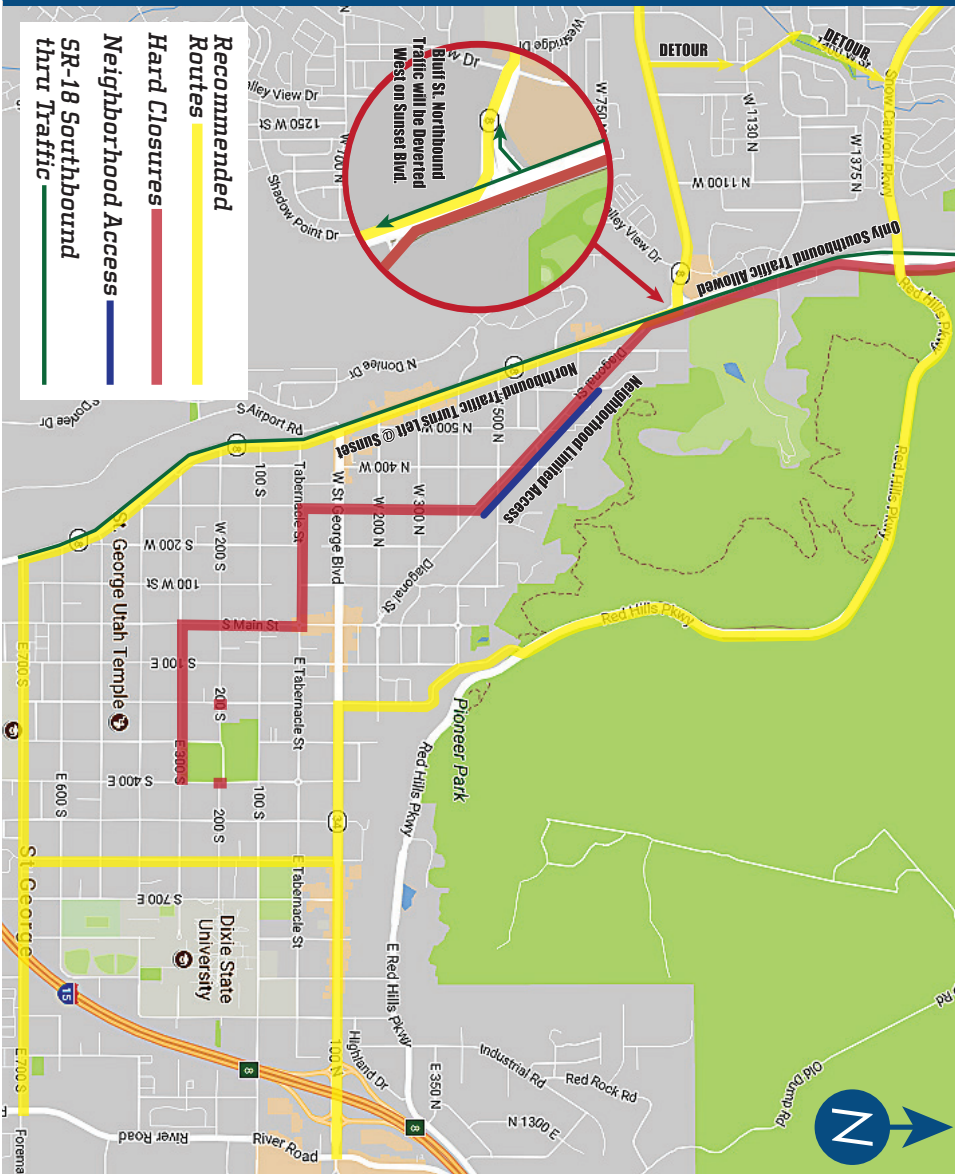


Road Closures/Traffic Impact ■ Sept. 30th - Oct. 2nd

For larger maps or questions visit:
www.stgeorgemarathon.com
marathon@sgcity.org ■ 435.627.4500



// ROAD CLOSURES MAP



Marathon Road Closures

Sept. 30th, Oct. 1st & 2nd

Detailed Information

THURSDAY, SEPT. 30TH

7:00 a.m. Closure of 300 South from 300 E - 400 E (Finish Line Area)

FRIDAY, OCT. 1ST

7:00 a.m. Closure of 300 South from 200 E - 300 E
 7:00 a.m. Closure of 300 East from 200 S - 400 S
 5:00 p.m. Closure of 400 East from 100 S - 300 S
 6:00-7:30 p.m. Intermittent Closures of 100 South from 400 E - 100 E, and 100 East from 100 S - 300 S, and 300 South from 100 E - 400 E (Fun Run Walk n' Roll)
 12:00 p.m. Closure of shoulder parking areas on Diagonal St from Bluff - 300 W, and 600

SATURDAY, OCT. 2ND

3:00 a.m. Closure of west bound traffic on 300 South from 400 E - 500 E
 5:30 a.m. The closure of **all streets accessing the Race Route** from SR-18 in Central to Diagonal St thru 200 East. SEE MAPS: www.stgeorgemarathon.com/maps
 5:30 a.m. Closure of SR-18 northbound travel lanes from Sunset Blvd to Red Hills Pkwy
 Traffic wishing to reach Snow Canyon Pkwy must detour west on Sunset and north on 1400 West
 5:30 a.m. Closure of SR-18 at the Snow Canyon Pkwy and Red Hills Pkwy intersection areas (local traffic from The Ledges will have 2-way access during the race from The Ledges to Snow Canyon Pkwy) Local traffic only.
 6:30 a.m. Closure of St. George Blvd at 300 West
 6:30 a.m. Closure of Main St at 100 South
 1:30-2:00 p.m. Removal of all traffic controls at the conclusion of the event.

Expect heavy delays as the majority of the course is closed throughout the duration of the race on Saturday. Please obey all traffic and parking laws, officers, and volunteers as they direct traffic. In addition to vehicle traffic, cyclists are restricted to the trail along the route.

The moving closure is expected to reach Veyo at about 8:30 a.m. and Snow Canyon State Park at 11:00 a.m. Prior to this, residents should be advised that traffic will be restricted to emergency and official marathon vehicles.

Unrestricted traffic on SR-18 will open between 1:30 p.m. - 2:00 p.m. Prior to this, some escorted traffic will be allowed as the last runners approach various detour routes. (DETOUR ROUTES: from Veyo thru Gunlock, down SR-18 thru Snow Canyon State Park - north entrance)

DOWNTOWN: Traffic going east and westbound thru downtown is restricted to roads on 400 South and further south. Residents are encouraged to use 700 South or other alternate routes that avoid the downtown area all together. Residents are invited to support the runners along the marathon course and at the finish line.

DIAGONAL STREET: Traffic on the northeast side of Diagonal St is restricted to local traffic only. There is no outlet on the northwest end of Diagonal. Leave the area eastbound on 500 N. Residents have restricted 2-way access along the north shoulder of Diagonal from 630 W - 500 N.

For larger maps visit: www.stgeorgemarathon.com/maps

Voted most Organized Marathon in the Nation by **RUNNERS** 2010